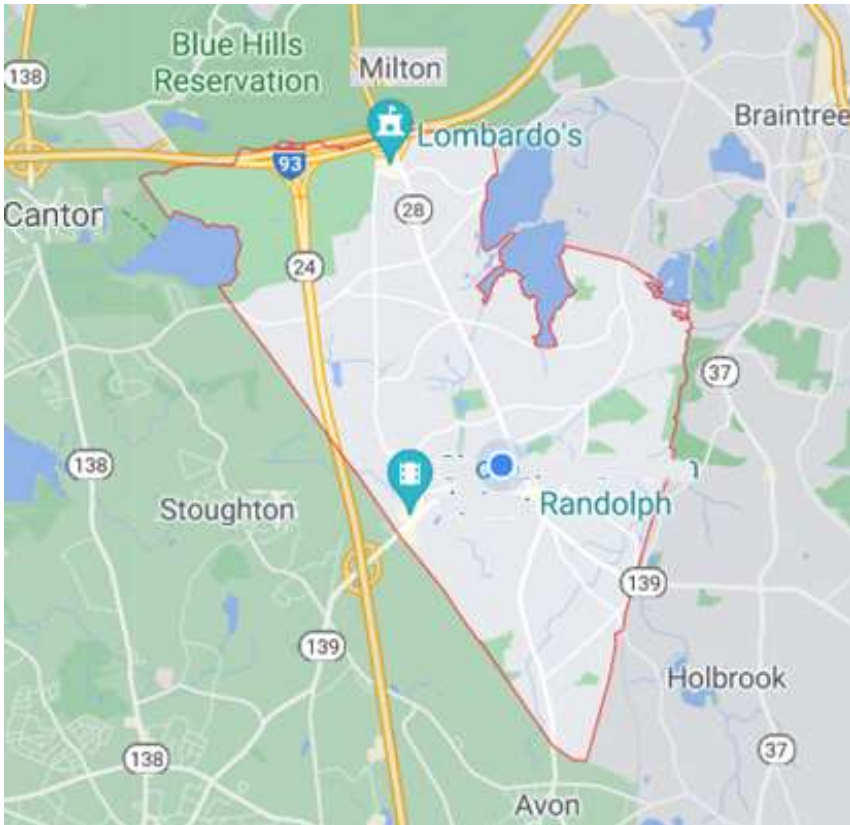


Post-2020 Census Redistricting:

Creating a Randolph-centric State Rep District

Prepared by Councilor Jesse Gordon,
Randolph District 2 Town Councilor

Based on his testimony on June 8, 2021
to the Special Joint Committee
on Redistricting

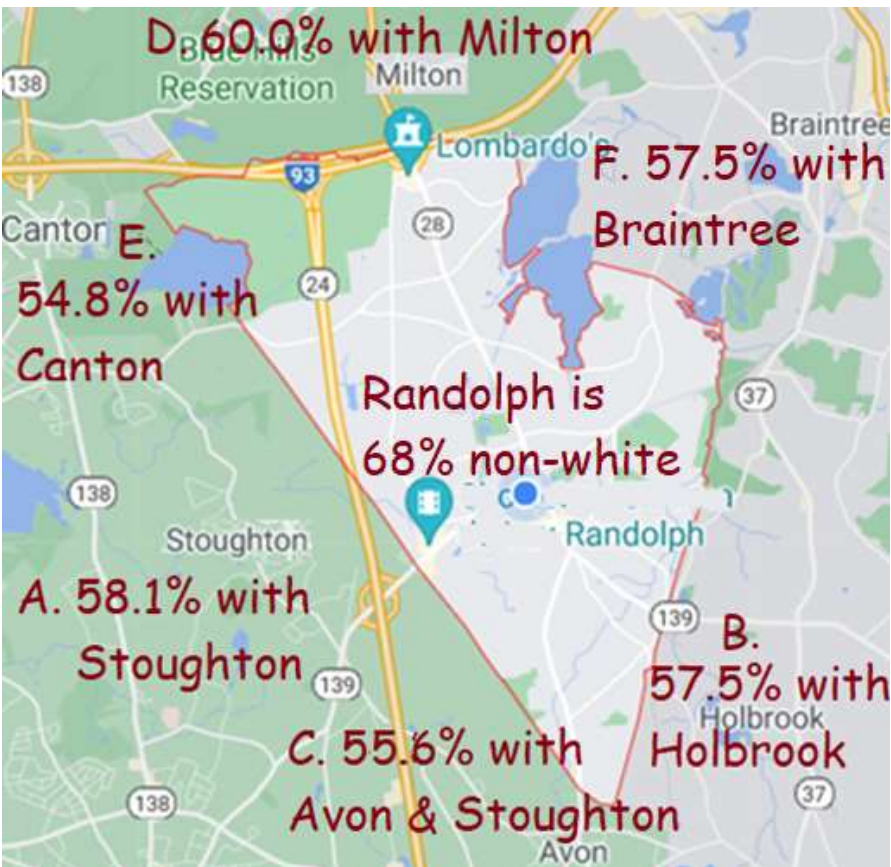


Executive Summary for the Joint Committee on Redistricting:

The 2019 Census estimates of population and demographics show that a Randolph-centric State Rep district would be a majority-minority district with...

- A. Randolph plus Stoughton precincts 1, 2, & 3 results in a 58.1% majority-minority district
- B. Randolph plus all of Holbrook results in a 57.5% majority-minority district
- C. Randolph plus all of Avon plus Stoughton precincts 1 & 2 results in a 55.6% majority-minority district
- D. Randolph plus Milton precincts 1, 5, & 10 results in a 60.0% majority-minority district
- E. Randolph plus Canton precincts 2, 3, & 4 results in a 54.8% majority-minority district
- F. Randolph plus Braintree precincts 1A, 1B, & 6B results in a 57.5% majority-minority district

We recommend any of the proposed State Rep districts A & B & C, but recommend against districts D & E & F.



Source: United States Census Bureau "Quick Facts" July 1, 2019 Population estimates and Population Characteristics
<https://www.census.gov/quickfacts/fact/table/stoughtontownnorfolkcountymassachusetts,randolphtowncitymassachusetts,cantontownnorfolkcountymassachusetts/PST040219>

Introduction for the people of Randolph...

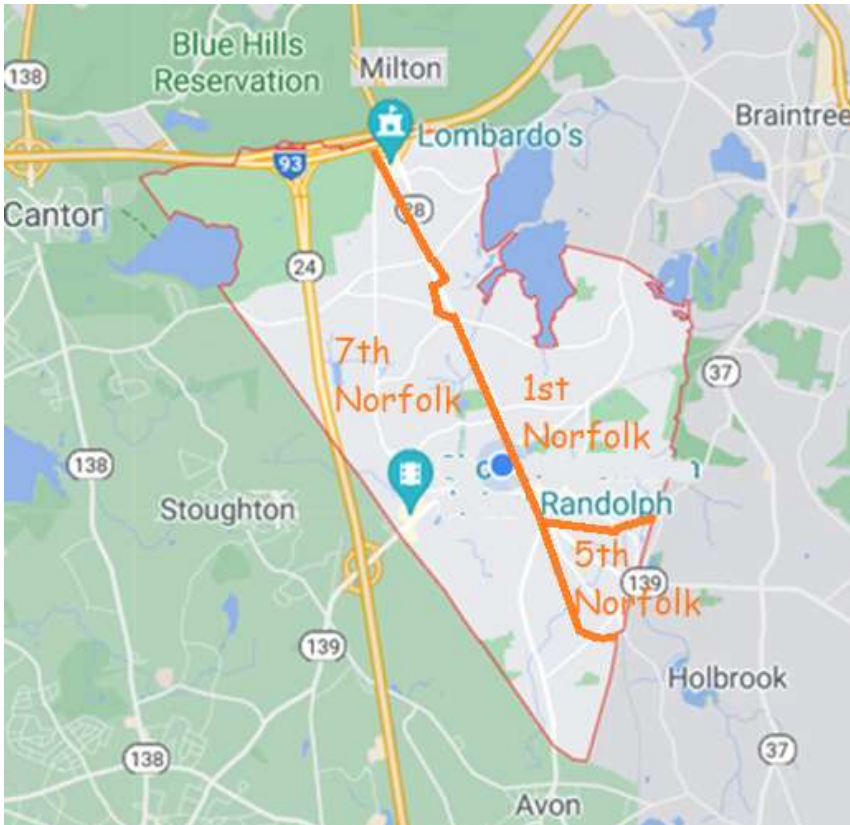
After the 2020 Census, the Commonwealth of Massachusetts “redistricts” our State Representative boundaries.

One goal of the Redistricting Committee is to create “majority-minority districts” to better represent non-white population centers.

After the 2010 Census, the number of majority-minority districts increased from 10 to 20 – good for diversity and good for democracy!

Randolph is currently split into three State Rep districts; this is our one chance in a decade to fix that, AND to create the 21st majority-minority district.

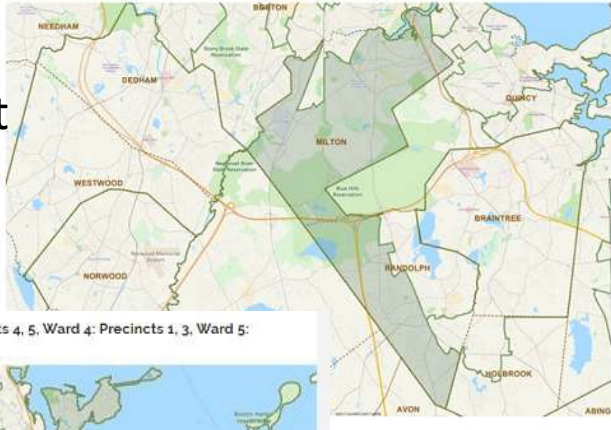
Let’s look at the Census numbers, to see how that can be done, by making a Randolph-centric State Rep district in conjunction with Stoughton, Canton, Avon, OR Holbrook.



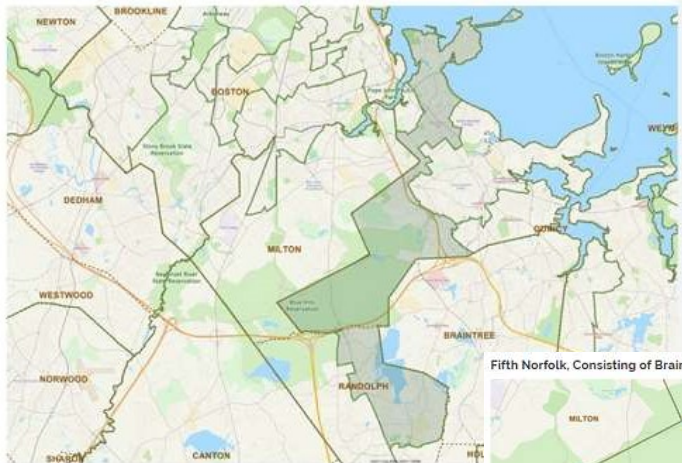
The Problem:

Randolph is split
into three State
Rep districts

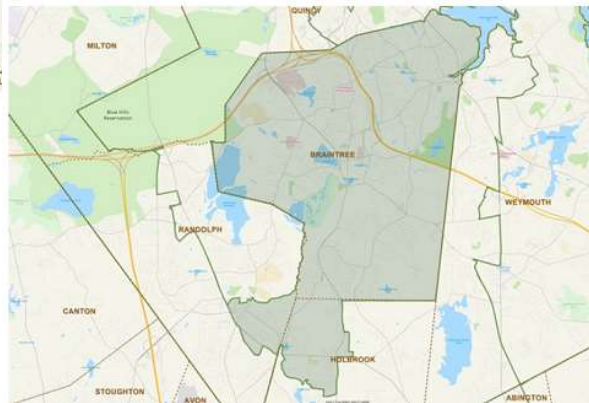
Seventh Norfolk, Consisting of Milton: Precincts 3, 4, 5, 6, 7, 8, 9, 10; Randolph: Precincts 1, 2, 3, 7, 8, 9, 10



First Norfolk, Consisting of Quincy: Ward 3: Precincts 4, 5, Ward 4: Precincts 1, 3, Ward 5: Precinct 2, Ward 6; Randolph: Precincts 5, 6, 11, 12.



Fifth Norfolk, Consisting of Braintree; Holbrook: Precinct 1; Randolph: Precinct 4.



The result:
No Randolph
residents in State
Legislature for
decades

The three Randolph State Rep districts have
been represented by non-Randolph residents
for decades:

7th Norfolk House district:

Rep. Bill Driscoll of Milton, 2017-2022
preceded by Rep. Walter Timilty of Milton, 1999-2016

1st Norfolk House district:

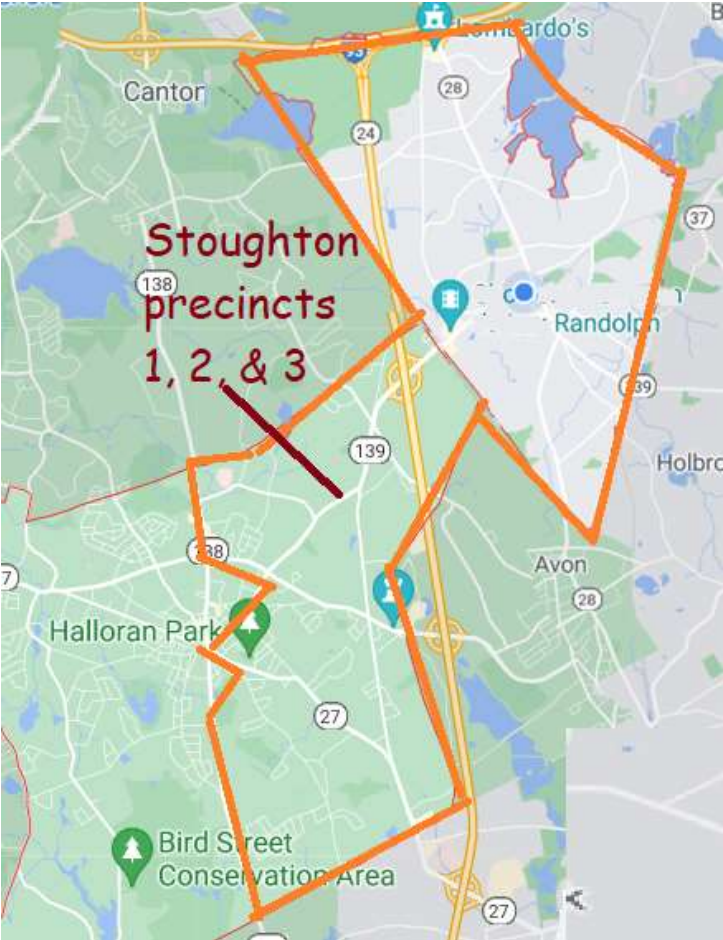
Rep. Bruce Ayers of Quincy, 1999-2022
preceded by Rep. Mike Bellotti of Quincy, 1993-1999
preceded by Rep. Mike Morrisey of Quincy, 1979-1993

5th Norfolk House district:

Rep. Mark Cusack of Braintree, 2011-2022
preceded by Rep. Joe Driscoll of Braintree, 2003-2011
preceded by Rep. Joe Sullivan of Braintree, 1993-2003

Randolph's population (34,000) requires that
neighboring precincts get added to reach the State
Rep District target of 44,000. Let's look at which
neighboring precincts in each direction would create a
Randolph-centric majority-minority district....

A. Randolph plus Stoughton precincts 1, 2, & 3 results in a 58.1% majority-minority district



Randolph + 3 Stoughton precincts 1/2/3

District population:
34,362 [Randolph's population]
+ 3 x 3,614 [Stoughton's population in three precincts = 10,842]
= 45,204 total district population

Non-white population:
68% x 34,362 [Randolph's non-white population = 23,366]
+ (3 x 3,614 x 27%) [Stoughton's non-white three precincts' population = 2,927]
= 26,293 non-white district population

Non-white percentage:
26,293 / 45,204
= 58.1% overall non-white population in proposed district

- Recommended because:
- Stoughton precinct 1 is adjacent to Randolph on east side of Rt 24
 - Eastern half of Stoughton has more minorities than western half

B. Randolph plus all of Holbrook results in a 57.5% majority-minority district



Randolph + Holbrook:

District population:
34,362 [Randolph's population]
+ 10,791 [Holbrook's population]
= 45,153 total district population

Non-white population:
68% x 34,362 [Randolph's non-white population = 23,366]
+ (10,791 x 24%) [Holbrook's non-white population = 2,589]
= 25,955 non-white district population

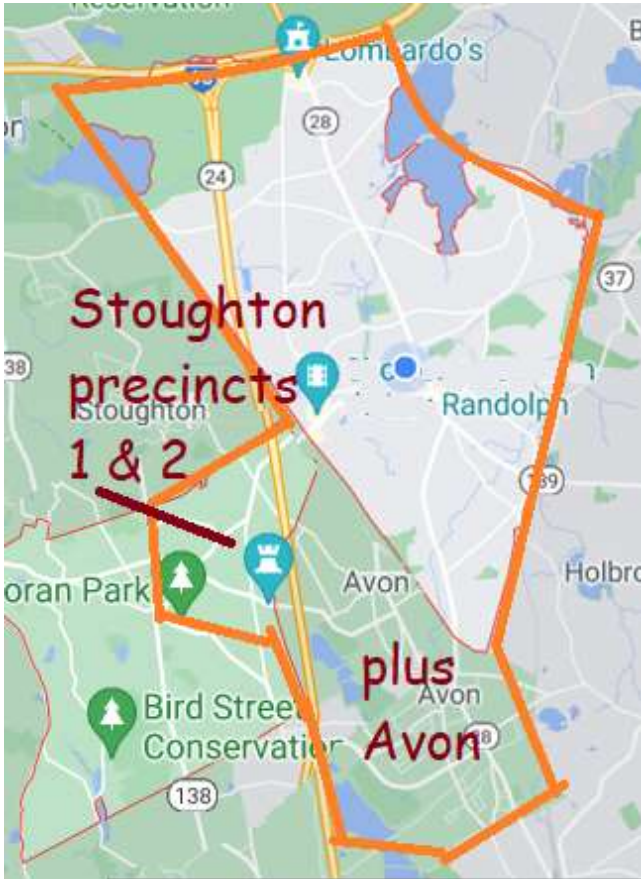
Non-white percentage:
25,955 / 45,153
= 57.5% overall non-white population in proposed district

Recommended because:

- Holbrook was historically “East Randolph” until 1872
- Holbrook and Randolph share many streets and businesses

Note: The 2010 census had Holbrook at only 8% non-white, and Holbrook is too small for a 2019 Census estimate. However, recent growth has Holbrook at 24% non-white, see <https://worldpopulationreview.com/us-cities/holbrook-ma-population>. If the 2020 final census holds Holbrook at 24%, this analysis works; if closer to 8%, this proposed district is not recommended, for the same reasons of “impermanence” of majority-minority status as discussed below for Canton.

C. Randolph plus all of Avon plus Stoughton precincts 1 & 2 results in a 55.6% majority-minority district



Randolph + Avon + Stoughton precincts 1 & 2:

District population:

34,362	[Randolph's population]
+ 4,356	[Avon's population]
+ 2 x 3,614	[Stoughton's population in two precincts = 7,228]
= 45,946	total district population

Non-white population:

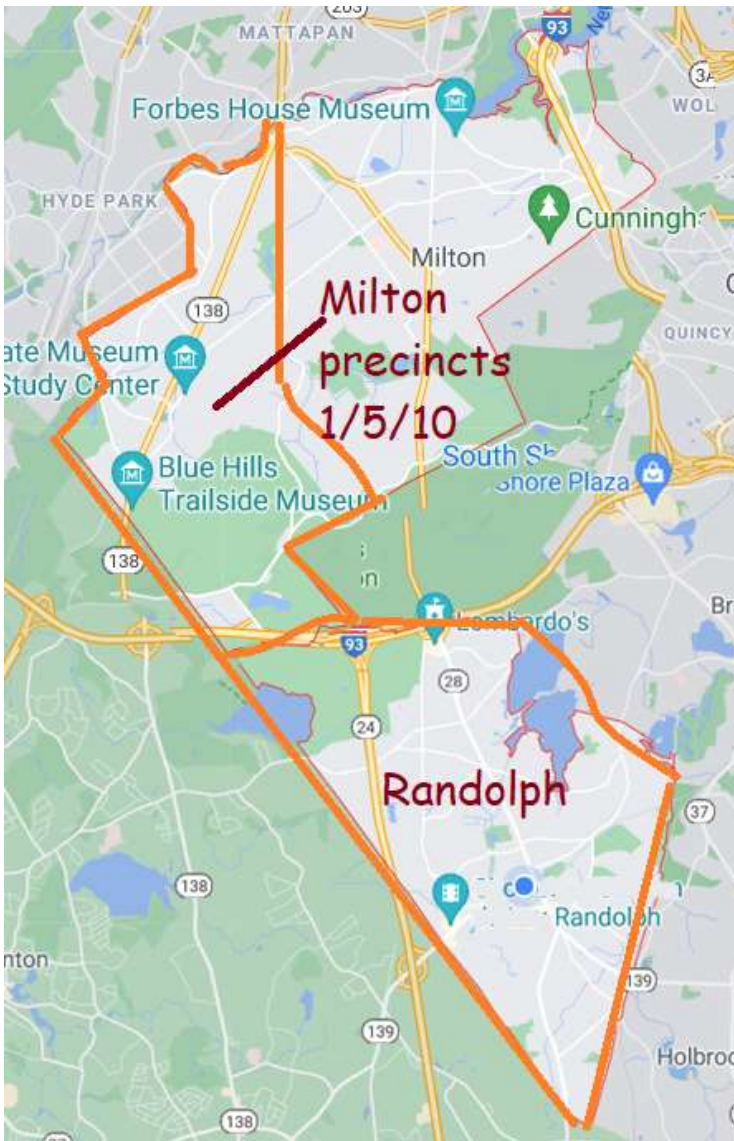
68% x 34,362	[Randolph's non-white population = 23,366]
+ (4,356 x 6%)	[Avon's non-white population = 261]
+ (2x3,614x27%)	[Stoughton's non-white two precinct population = 1,952]
= 25,579	non-white district population

Non-white percentage:

25,579 / 45,946
= 55.6% overall non-white population in proposed district

Recommended because:

- Stoughton precinct 1 is adjacent to Randolph on east side of Rt 24
- Avon shares Main Street with Randolph (Rt 28 goes through both)
- More compactly contiguous than Stoughton districts 1/2/3 plus Randolph



D. Randolph plus Milton precincts 1, 5, & 10 results in a 60.0% majority-minority district

Randolph + 3 Milton precincts 1/5/10:

District population:

34,362	[Randolph's population]
+ 3 x 2,760	[Milton's population in three precincts = 8,280]
= 42,642	total district population

Non-white population:

68% x 34,362	[Randolph's non-white population = 23,366]
+ (3x2,760x27%)	[Milton's non-white three precinct population = 2,235]
= 25,601	non-white district population

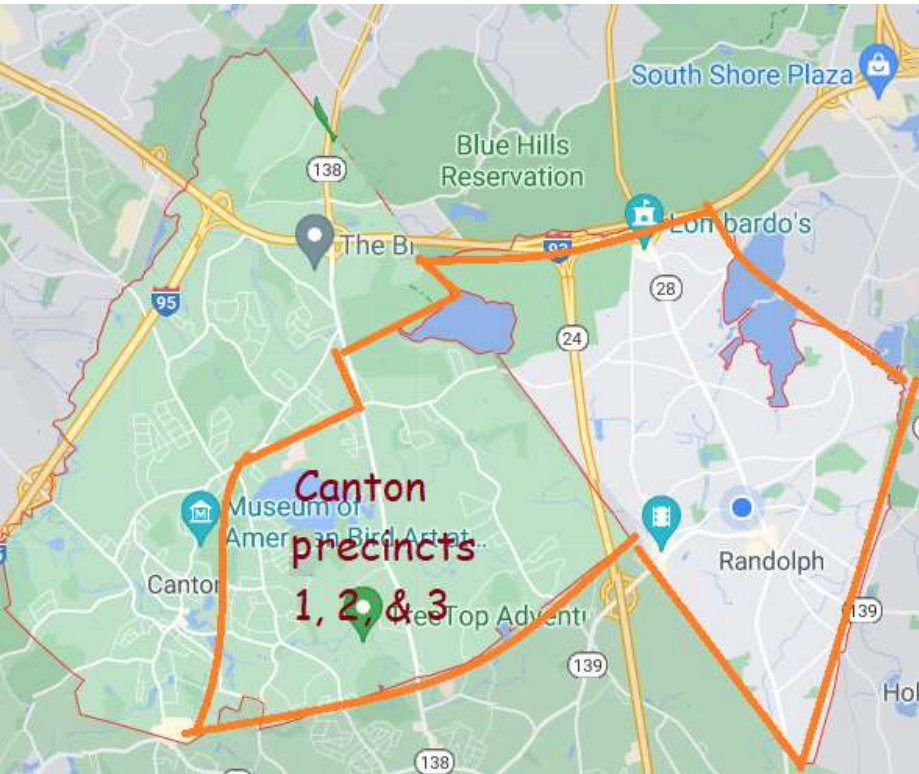
Non-white percentage:

25,601 / 42,642
= 60.0% overall non-white population in proposed district

Not recommended because:

- Milton precinct 1 is part of majority-minority district 12th Suffolk
- Changing Milton precincts would require redrawing Boston districts
- Incumbent State Rep resides in precinct 7, but precincts 5 & 10 would be giving up in-town representation with this redistricting.

E. Randolph plus Canton precincts 1, 2, & 3 results in a 54.8% majority-minority district



Randolph + 3 Canton precincts 1/2/3:

District population:
 34,362 [Randolph's population]
 + 3 x 3,967 [Canton's population in three precincts = 11,901]
 = 46,263 total district population

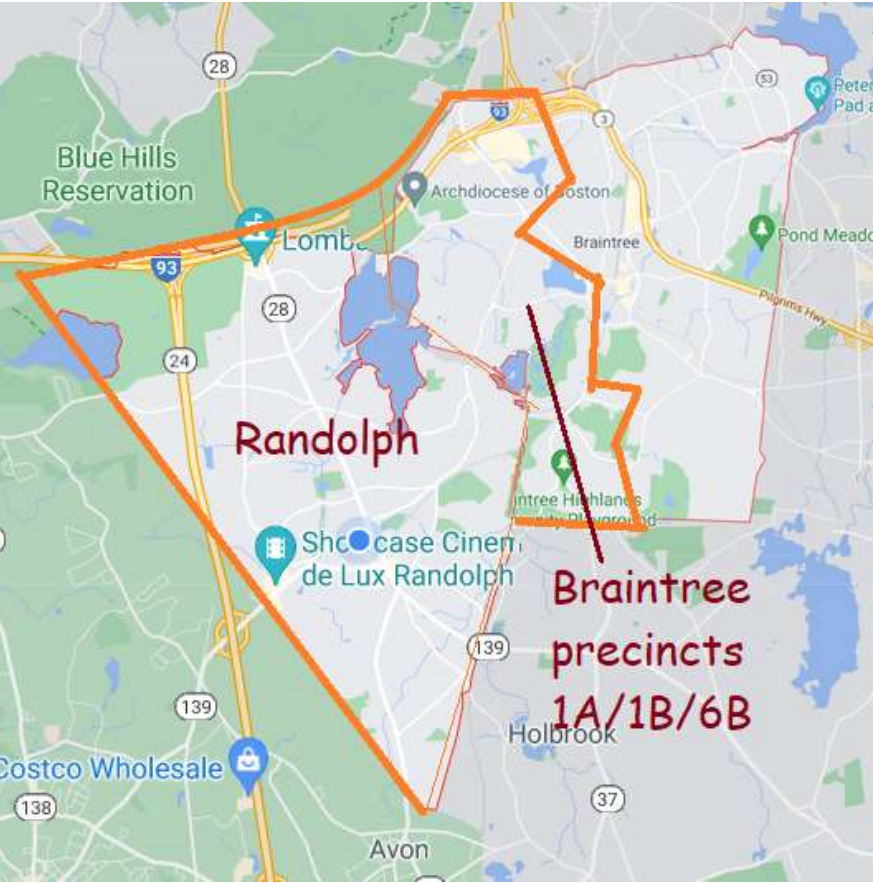
Non-white population:
 68% x 34,362 [Randolph's non-white population = 23,366]
 + (3x3,967x17%) [Canton's non-white three precinct population = 2,023]
 = 25,389 non-white district population

Non-white percentage:
 25,389 / 46,263
 = 54.8% overall non-white population in proposed district

Not recommended because:

- Only one road connects the two halves (Canton St / Randolph St); the rest of the long border is separated by Rt 24 and Blue Hills.
- 2019 estimates vs. census final figures makes 54.8% uncertain, especially when considering that 2030 census may lose this district its majority-minority status, while the others proposed are “permanent”

E. Randolph plus Braintree precincts 1A, 1B, & 6B results in a 57.5% majority-minority district



Randolph + 3 Braintree precincts 1A/1B/6B:

District population:
 34,362 [Randolph's population]
 + 3 x 3,099 [Braintree's population in three precincts = 11,901]
 = 43,659 total district population

Non-white population:
 68% x 34,362 [Randolph's non-white population = 23,366]
 + (3x3,099x19%) [Braintree's non-white three precinct population = 1,766]
 = 25,132 non-white district population

Non-white percentage:
 25,132 / 43,659
 = 57.5% overall non-white population in proposed district

- Not recommended because:
- Braintree is larger than Randolph and enjoys a Braintree-centric district; they would be giving up legislative representation.
 - If not for that, this is a sensible district: we share the water reservoir, North Street's bus #238, and the Blue Hills, in those three precincts.

Conclusions:

- Randolph enjoys the highest diversity of any municipality in Massachusetts, and the non-white population has increased and will likely continue to increase into the future.
- Therefore, a Randolph-centric State Rep district will ensure the 21st majority-minority district, which will endure through future census enumerations.
- Randolph is not sufficiently large yet (about 34,000 people) to warrant its own State Rep district; three precincts currently should be added to reach the 44,000-person target.
- Randolph IS sufficiently diverse that, combined with appropriately-selected three neighboring precincts, a compactly contiguous majority-minority district results.
- That's true for neighboring precincts in Stoughton and Avon, and likely true for Holbrook (pending the final 2020 census results) – those would create an enduring majority-minority district.
- Choosing three neighboring precincts in Canton or Braintree would still exceed 50% non-white, but the figures are close to 50%, and hence depend on the final 2020 census results – and are less certain to maintain a majority-minority district through the 2030 census.
- The original testimony to the Special Joint Committee on Redistricting included Milton in this analysis, but the Committee chair pointed out that redistricting Milton impinges upon another majority-minority district. Hence we removed Milton from our analysis, even though it well exceeds 50% non-white when combined with Randolph.
- Some precincts in Milton and Braintree would have to give up having an in-town resident as their representative; that's another reason to remove Milton and Braintree from recommended districts.

Data:

<i>Municipality</i>	<i>2019 population estimate</i>	<i>Percent non-white</i>	<i>Number of precincts</i>	<i>Total residents per precinct</i>	<i>Non-white residents per precinct</i>
Randolph	34,362	68%	12	2,864	1,947
Stoughton	28,915	27%	8	3,614	976
Milton	27,595	27%	10	2,760	745
Holbrook	10,791	24%	1	10,791	2,589
Canton	23,805	17%	6	3,968	674
Avon	4,356	6%	1	4,356	261
Braintree	37,190	19%	12	3,099	589

Sources:

- United States Census Bureau “Quick Facts” July 1, 2019 Population estimates and Population Characteristics
<https://www.census.gov/quickfacts/fact/table/stoughtontownnorfolkcountymassachusetts,randolphtowncitymassachusetts,cantownnorfolkcountymassachusetts/PST040219>
- World Population Review: U.S. Cities:
<https://worldpopulationreview.com/us-cities/holbrook-ma-population>
<https://worldpopulationreview.com/us-cities/avon-ma-population>
<https://worldpopulationreview.com/us-cities/milton-ma-population>

Special Joint Committee on Redistricting membership and contacts:

State Senate Members:

- William N. Brownsberger, Chair
william.brownsberger@masenate.gov
State House, Room 319 Boston, MA 02133
- Anne M. Gobi, Vice Chair
anne.gobi@masenate.gov
- Sonia Chang-Diaz
Sonia.Chang-Diaz@masenate.gov
- Julian Cyr
- Adam Gomez
- Adam G. Hinds
- Ryan C. Fattman
- Committee website (with contact page):
<https://malegislature.gov/Redistricting/Committee>
- Advocacy source: Drawing Democracy Coalition,
<https://www.madrawingdemocracy.org/>
Tanekwah Hinds, thinds@aclum.org
Rahsaan D. Hall, rhall@aclum.org
Racial Justice Program at the ACLU of MA
- Downloadable version of this report:
<http://jessegordon.com/Redistricting>

State House Members:

- Michael J. Moran, Chair
Michael.Moran@mahouse.gov
24 Beacon St., Room 39, Boston, MA, 02133
- Marcos A. Devers, Vice Chair
marcos.devers@mahouse.gov
24 Beacon St., Room 527A, Boston, MA, 02133
- Josh S. Cutler
- Kip A. Diggs
- Tricia Farley-Bouvier
- Carole A. Fiola
- Thomas A. Golden, Jr.
- Daniel J. Hunt
- Frank A. Moran
- James J. O'Day
- John J. Mahoney
- Sarah K. Peake
- Chynah Tyler
- William M. Straus
- Andres X. Vargas
- Joseph F. Wagner
- Bud L. Williams
- Paul K. Frost (Ranking Minority)
- Nicholas A. Boldyga
- Shawn Dooley
- Kimberly N. Ferguson